



PIPER'S LANDING PLAT NO. 4

I, LOUISE V. ISAACS, Clerk of the Circuit Court of Martin County, Florida, hereby certify that this plat was filed for record in Plat Book 10, Page 18, Martin County, Florida, public records, this day of , 1986

LOUISE V. ISAACS, CLERK
CIRCUIT COURT
MARTIN COUNTY, FLORIDA

BY: Deputy Clerk

File No. _____

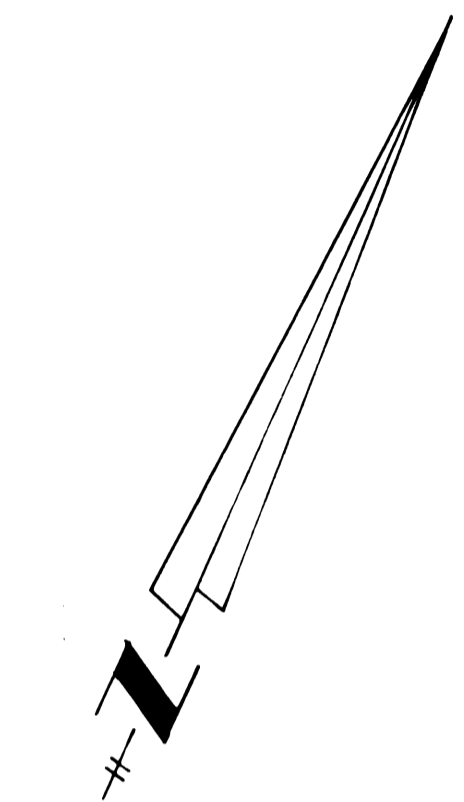
SHEET 2 OF 2 SHEETS

Hutcheon Engineers
CIVIL ENGINEERS & SURVEYORS

BELLE GLADE STUART

CURVE TABLE				
NO.	DELTA	RADIUS	LENGTH	CHORD
1.	48°11'23"	25.00'	21.03	20.41'
2.	48°11'23"	25.00'	21.03	20.41'
3.	16°04'52"	25.00'	7.02'	6.99'
4.	32°06'31"	25.00'	14.01'	13.83'
5.	68°20'09"	25.00'	29.82'	28.08'
6.	07°58'30"	303.02'	5.16'	5.16'
7.	46°54'41"	25.00'	20.47'	19.90'
8.	39°17'11"	25.00'	17.14'	16.81'
9.	86°11'52"	25.00'	37.61'	34.16'
10.	25°12'01"	564.74'	248.39'	246.39'
11.	39°47'20"	260.69'	181.04'	177.42'
12.	95°16'50"	25.00'	41.57'	36.95'
13.	48°11'23"	25.00'	21.03	20.41'
14.	76°41'34"	25.00'	33.46'	31.02'
15.	3°19'33"	698.90'	40.57'	40.56'
16.	9°41'52"	500.95'	84.79'	84.69'
17.	9°41'52"	560.95'	94.95'	94.83'
18.	9°41'52"	530.95'	89.87'	89.76'
19.	1°09'35"	638.90'	12.93'	12.93'
20.	103°00'26"	25.00'	44.94'	39.13'
21.	86°26'06"	25.00'	37.71'	34.24'
22.	39°47'20"	200.68'	139.37'	136.58'
23.	9°25'02"	668.90'	109.94'	109.82'
24.	6°35'32"	668.90'	76.96'	76.92'
25.	15°59'52"	503.02'	140.45'	139.99'
26.	6°57'30"	503.02'	61.09'	61.05'
27.	13°27'11"	224.29'	52.66'	52.54'
28.	25°02'30"	222.09'	97.07'	96.30'
29.	31°24'49"	221.92'	121.68'	120.16'
30.	52°03'58"	480.00'	436.19'	421.33'
31.	23°44'45"	385.00'	159.56'	158.42'
32.	37°17'11"	500.00'	325.38'	319.67'
33.	36°16'09"	450.00'	284.86'	280.13'
34.	30°07'40"	302.77'	199.21'	197.38'
35.	38°54'07"	277.78'	188.60'	185.00'
36.	84°46'32"	277.78'	411.00'	374.52'
37.	123°40'40"	252.78'	545.64'	445.71'
38.	76°00'05"	302.78'	401.63'	372.82'
39.	21°46'15"	453.84'	172.45'	171.41'
40.	21°46'15"	503.84'	191.44'	190.30'
41.	25°38'39"	303.02'	135.62'	134.49'
42.	44°35'47"	253.02'	196.94'	192.00'
43.	50°29'18"	385.00'	339.26'	328.39'
44.	19°03'40"	200.69'	66.76'	66.46'
45.	08°37'42"	534.74'	80.53'	80.45'
46.	36°46'23"	278.02'	178.43'	175.99'
47.	7°49'24"	278.02'	37.96'	37.93'

TANGENT TABLE		
NO.	BEARING	DISTANCE
1.	S23°12'43"E	52.36
2.	S37°59'55"W	40.61
3.	S03°56'43"E	29.07
4.	N43°15'25"W	56.41
5.	N53°24'34"W	20.00

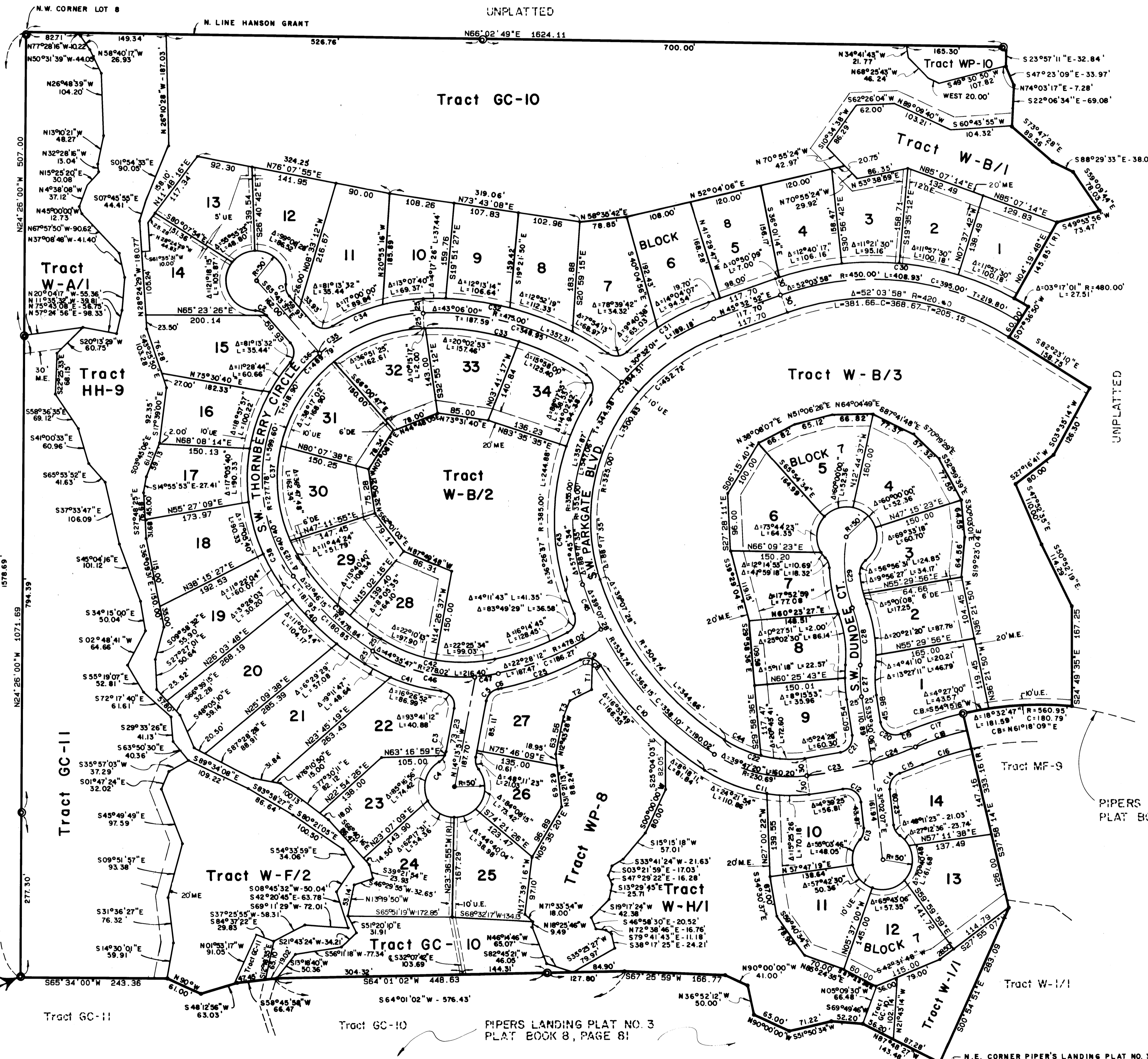
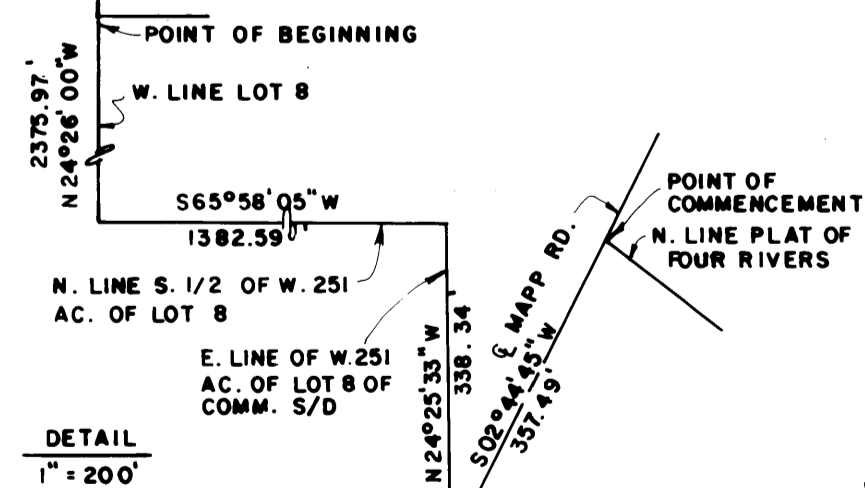


Scale in feet
1" = 100'

AUGUST 1985

- ⊙ Denotes (P.R.M.) Permanent Reference Monument
- ⊙ Denotes (P.C.P.) Permanent Control Point
- C-1 Denotes Curve Data as shown in the Curve Table
- T-1 Denotes Lines as shown in the Tangent Table
- (R) Denotes a Radial Line
- GC Denotes Golf Course Tracts
- WP Denotes Wet Prairies
- UP Denotes Utility Plants
- W Denotes Water Tracts
- GA Denotes Green Area
- UE Denotes Utility Easement
- ME Denotes Maintenance Easement
- HH Denotes Hydric Hammock
- DE Denotes Drainage Easement

- NOTE:
- All return radii 25'
 - Bearings hereon referenced to Pipers Landing Plat No. 3, Plat Book 8, Page 81 Public Records, Martin County, Florida.



PIPER'S LANDING PLAT NO. 2
PLAT BOOK 8, PAGE 67

PIPER'S LANDING PLAT NO. 3
PLAT BOOK 8, PAGE 81

N.E. CORNER PIPER'S LANDING PLAT NO. 3